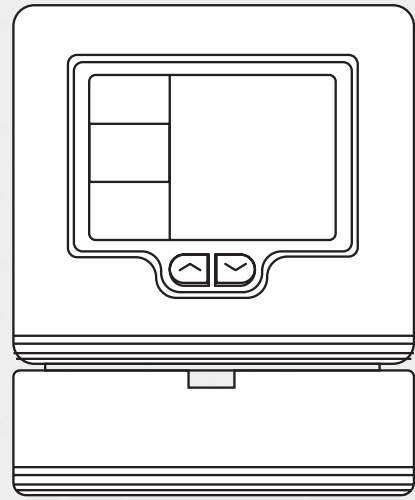


Model #
1000140-14

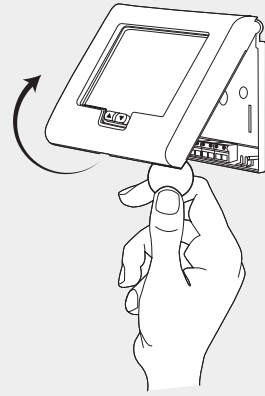


1

On the provided list of thermostat serial numbers, document the location for each thermostat.

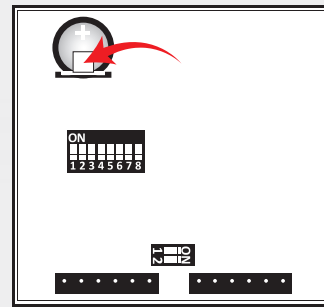


2



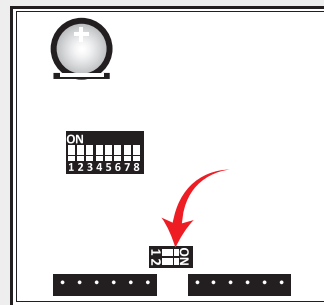
Insert a small coin (dime) in the release slot on the bottom of the thermostat and gently twist the coin to release the thermostat from the subbase.

3



If present, remove the white battery tab.

4



Confirm the two Modbus slide switches are in the ON position.

5



Make sure HVAC power is de-energized!
Connect the thermostat wires to the HVAC equipment Hot and Common.

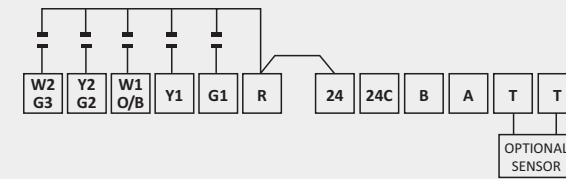
Terminal	HVAC	Transceiver Wire
24C	C	Black
24	R	Red

6

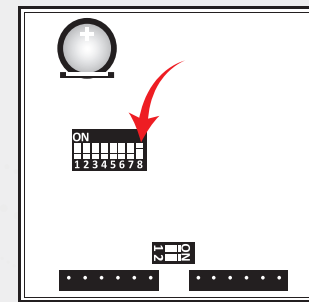
Connect the remaining HVAC wires to the thermostat terminals based on the specific equipment and corresponding wiring diagram on the back of this sheet. After inserting each wire, tighten the set screw.

NOTE: To wire an indoor or outdoor remote sensor:

- Wiring the sensor to the T T terminals.
- The sensor wiring must be a separate 18-2 cable and should not exceed 200 feet.



7



Set the thermostat slide switches based on the specific equipment configuration and tables on the back of this sheet, and then attach the thermostat to the subbase.

NOTE: Switch 8 must be in the ON position.

8



Ensure wiring is complete, and energize HVAC power.

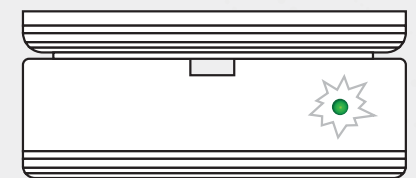
9

REFER TO THE T-32-P THERMOSTAT INSTALLATION GUIDE FOR MENU SETTINGS:

- Required for the specific equipment applications,
- To confirm the baud rate is set at 19.2, and
- To confirm the Modbus address is set at 01.

LED Behaviours

Pressing SW1 will 'double flash' the LED if device is on a network. The LED will also 'double flash' if the 'identify' command is sent to the device.



LED Color	Device Status Description
	Solid Green Searching for a network
	Flashing Green Joining a network
	LED OFF Device is on a network

CONTINUED.....

HEAT ONLY

SLIDE SWITCH SETTING							
1	2	3	4	5	6	7	8
OFF	OFF	OFF	OFF	OFF or ON	OFF	OFF or ON	ON

2 HEAT / 1 COOL HEAT PUMP

SLIDE SWITCH SETTING							
1	2	3	4	5	6	7	8
OFF	ON	OFF	OFF or ON	OFF or ON	OFF	OFF or ON	ON

3 HEAT / 2 COOL DUAL FUEL

SLIDE SWITCH SETTING							
1	2	3	4	5	6	7	8
OFF	ON	ON	OFF or ON	OFF or ON	OFF	OFF or ON	ON

1 HEAT / 1 COOL

SLIDE SWITCH SETTING							
1	2	3	4	5	6	7	8
OFF	OFF	OFF	OFF	OFF or ON	OFF	OFF or ON	ON

3 HEAT / 2 COOL HEAT PUMP

SLIDE SWITCH SETTING							
1	2	3	4	5	6	7	8
OFF	ON	ON	OFF or ON	OFF or ON	OFF	OFF or ON	ON

2 HEAT / 2 COOL

SLIDE SWITCH SETTING							
1	2	3	4	5	6	7	8
OFF	OFF	ON	OFF	OFF or ON	OFF	OFF or ON	ON

2 HEAT / 1 COOL DUAL FUEL

SLIDE SWITCH SETTING							
1	2	3	4	5	6	7	8
OFF	OFF or ON	OFF	OFF or ON	OFF or ON	OFF	OFF or ON	ON

Terminal	Designation
W2	2 nd stage heating / auxiliary heat
Y2	2 nd stage compressor
W1	First stage heating
O/B	Reversing Valve
Y1	First stage compressor
G1	Fan relay
R	24 volt hot (jumped to "24")
24	24 volt hot
24C	24 volt common
B	Modbus communications
A	Modbus communications
T	Auxiliary input terminal
T	Auxiliary input terminal

Switch	Designation
Sw1	Fan Relay
Sw2	Heat / Cool
Sw3	Single Stage
Sw4	<input type="checkbox"/> Equipment Controls Fan <input type="checkbox"/> Reversing Valve for Heat Pumps <input type="checkbox"/> OFF - O = RV Energized in Cooling <input type="checkbox"/> ON - B = RV Energized in Heating
Sw5	Short Cycle Protection <input type="checkbox"/> OFF - None <input type="checkbox"/> ON - Two minutes
Sw6	Non-programmable
Sw7	Minimum Run Time <input type="checkbox"/> OFF - Two minutes <input type="checkbox"/> ON - Six minutes
Sw8	Setpoints - Must be in ON position

SERIAL NUMBER INFORMATION AND TRACKING

The serial number or ID of a device is used to track device installation locations and details for the commissioning process. The identification information for each device should be tracked in a meaningful way, many devices include duplicate 'stickers' with this information. Autani provides an iOS app to assist with the process.



For help getting starting with the iOS Commissioning App please see Autani's User Guide for the iOS Commissioning App.



Once commissioning details are collected, either through the iOS Commissioning App, or by tracking identifiers on drawings/spreadsheets. Please provide this information to support@autani.com to begin the commissioning process.