



ONE LINE DIAGRAMS

TOC

Network Diagrams

- Autani Mesh Network Diagram
- Autani Manager Network Connectivity Diagram
- Autani Tier 3 - Energy Center Topology Diagram
- Typical Riser Diagram Using KPA Tier 3 -Energy Center Platform
- Multiple Autani Managers Network Topography Diagram
- EnOcean Device Network Layout Diagram

Small Office/Conference Fixture Control (Single Zone)

- PPA102S.C1 6A Line Voltage Bluetooth Fixture Controller +IFS105E.A0 Integrated Round 12V Low Bay Eco Sensor + WP1013.A0 (3 Button) Battery-Powered Bluetooth Wall Switch + WF20R.A0 20A Plug Load Bluetooth Controller
- IWS102.A0 Line Voltage Occ/Vacancy Sensor Bluetooth Wall Switch + WF20R.A0 20A Plug Load Bluetooth Controller

Large Office/Conference Fixture Control (Two + Zones)

- PPA102S.C1 6A Line Voltage Bluetooth Fixture Controller + IFS105E.A0 Integrated Round 12V Low Bay Eco Sensor+ WP1013.A0 (3 Button) Battery-Powered Bluetooth Wall Switch + WF20R.A0 20A Plug Load Bluetooth Controller

Large Office/Conference Zone Control (Single Zone)

- PPA104S.B1 Line Voltage 20A Bluetooth Zone Control+ EFS107E.A0 12V Dual-Tech Ceiling Eco Sensor + RTP - Tee Adaptor + WP1013.A0 (3 Button) Battery-Powered Bluetooth Wall Switch

Large Office/Conference Zone Control (Two + Zones)

- PPA104S.B1 Line Voltage 20A Bluetooth Zone Control + RTP - Tee Adaptor + EFS107E.A0 12V Dual-Tech Ceiling Eco Sensor + WP1013.A0 (3 Button) Battery-Powered Bluetooth Wall Switch + WF20R.A0 20A Plug Load Bluetooth Controller

High Bay Lighting Control

- EFS104.B1 External Line Voltage High Bay Sensor + WP1013.A0 (3 Button) Battery-Powered Bluetooth Wall Switch

Outdoor Lighting Control

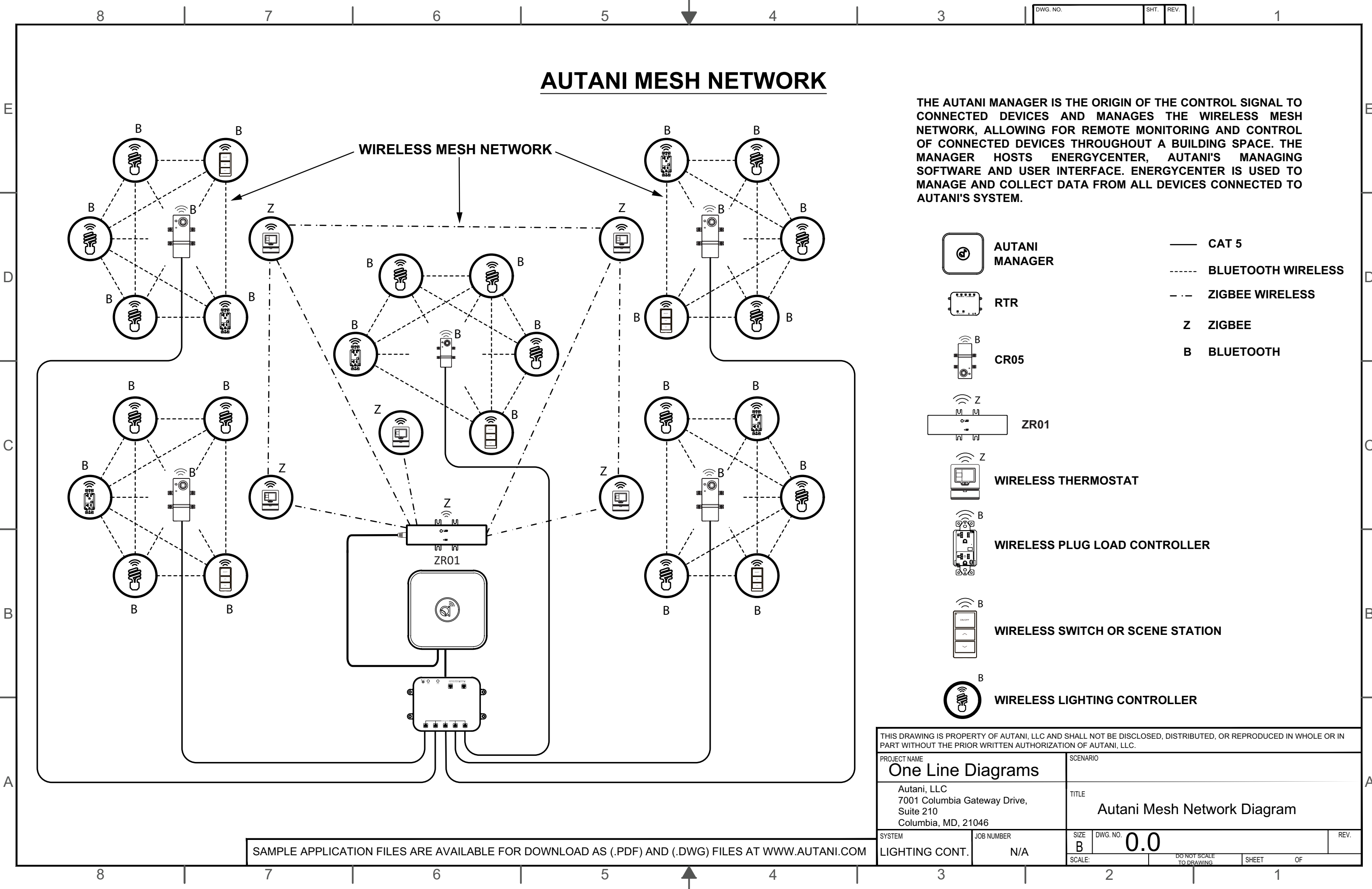
- EFS106-AUX-W.B2 Plug and Play High Bay Long-Range Sensor + WSC01

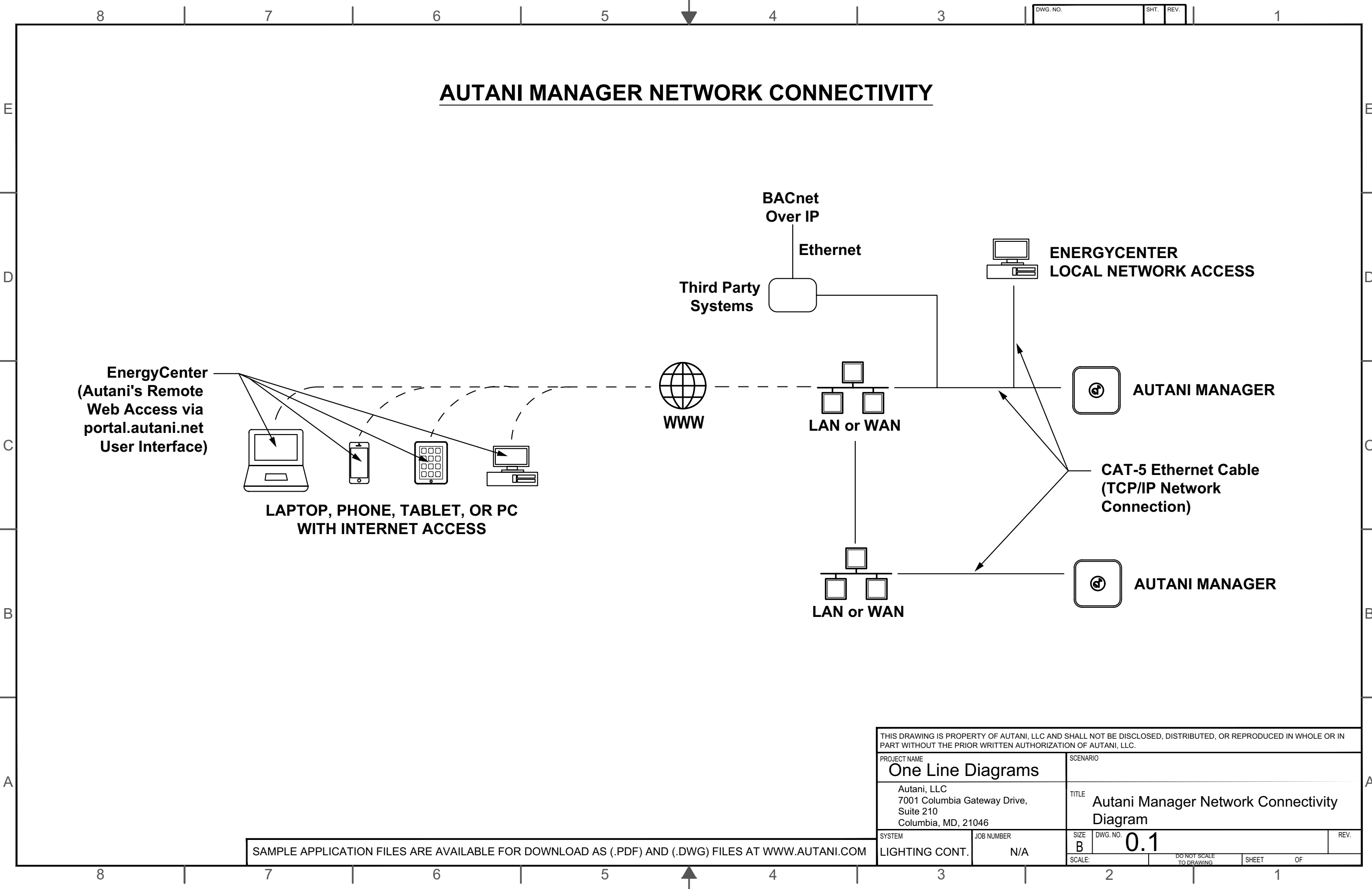
Emergency - Hallway

- PPA109S.B1 UL924 Emergency Lighting Controller + PPA104S.B1 Line Voltage 20A Bluetooth Zone Control+ RTP + EFS107E.A0 12V Dual-Tech Ceiling Eco Sensor + WP1013.A0 (3 Button) Battery-Powered Bluetooth Wall Switch

HVAC

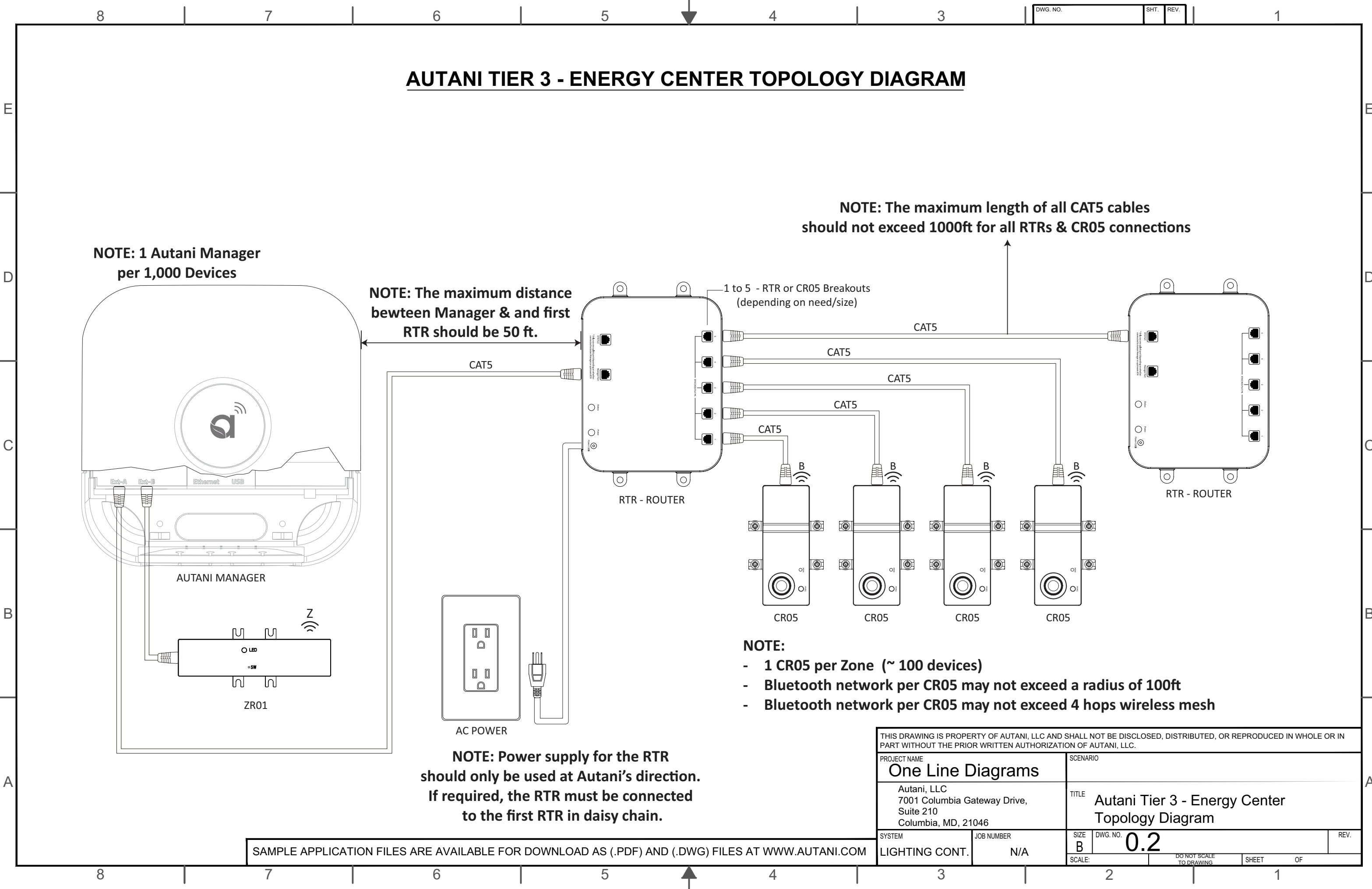
- HVAC Controls Sample





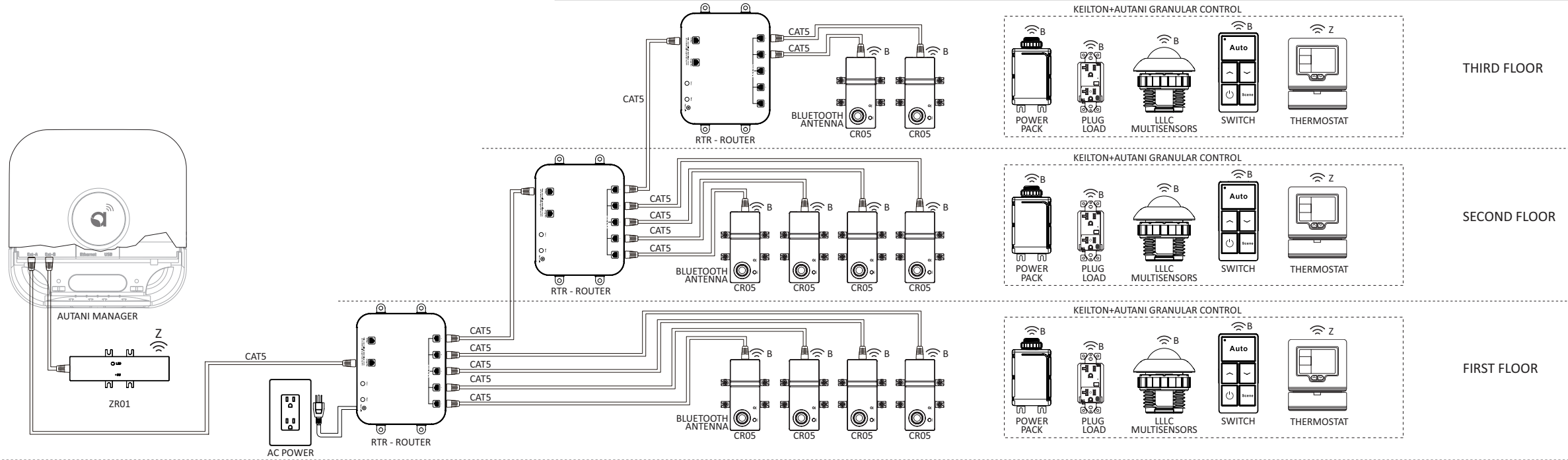
SAMPLE APPLICATION FILES ARE AVAILABLE FOR DOWNLOAD AS (.PDF) AND (.DWG) FILES AT WWW.AUTANI.COM

THIS DRAWING IS PROPERTY OF AUTANI, LLC AND SHALL NOT BE DISCLOSED, DISTRIBUTED, OR REPRODUCED IN WHOLE OR IN PART WITHOUT THE PRIOR WRITTEN AUTHORIZATION OF AUTANI, LLC.					
PROJECT NAME			SCENARIO		
One Line Diagrams					
Autani, LLC 7001 Columbia Gateway Drive, Suite 210 Columbia, MD, 21046			TITLE Autani Manager Network Connectivity Diagram		
SYSTEM		JOB NUMBER		SIZE	REV.
LIGHTING CONT.		N/A		B	0.1
SCALE:		DO NOT SCALE TO DRAWING		SHEET	OF
				2	1

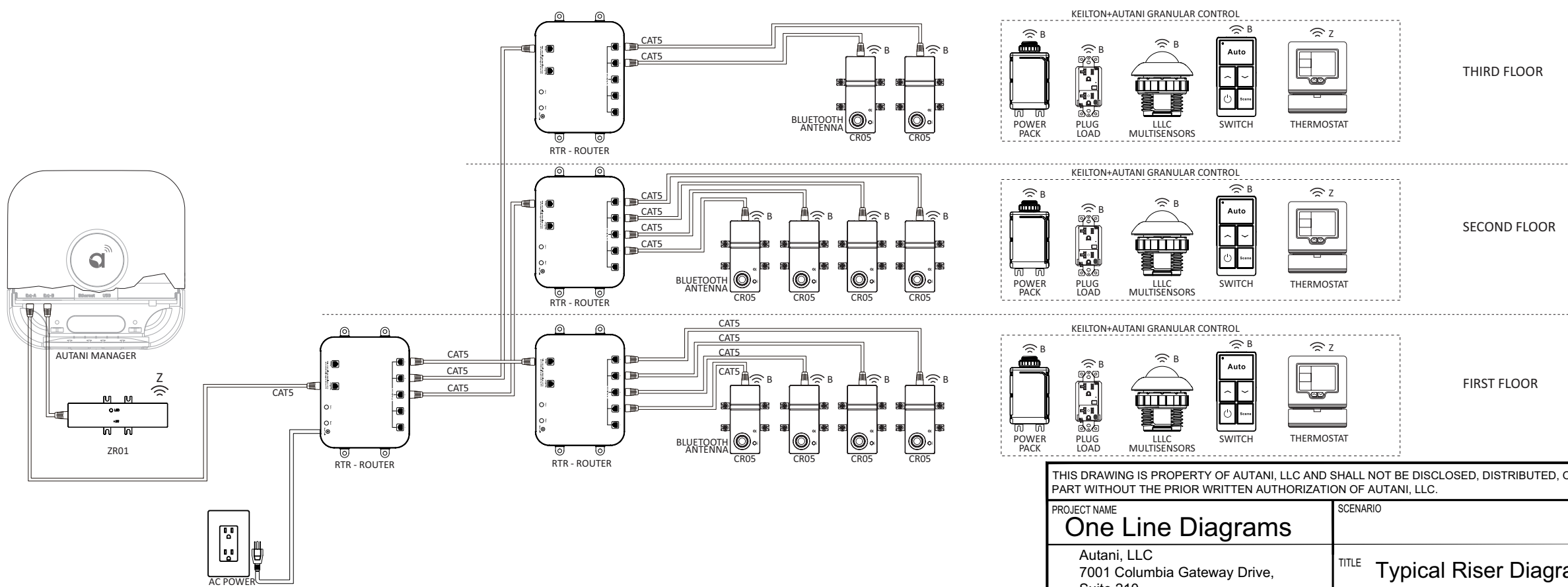


TYPICAL RISER DIAGRAM USING KPA TIER 3 - ENERGY CENTER PLATFORM

DAISY CHAIN

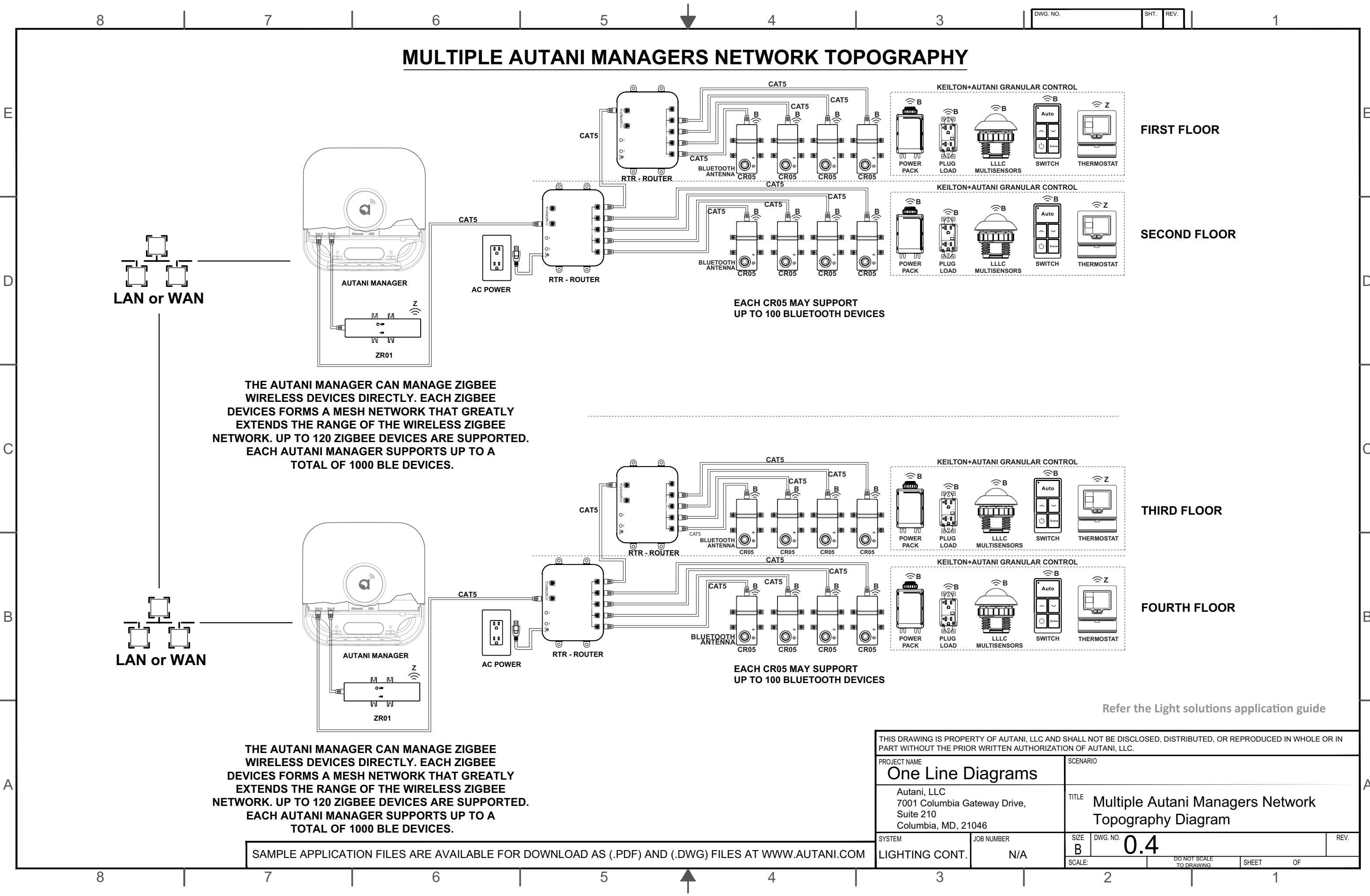


HOME RUN

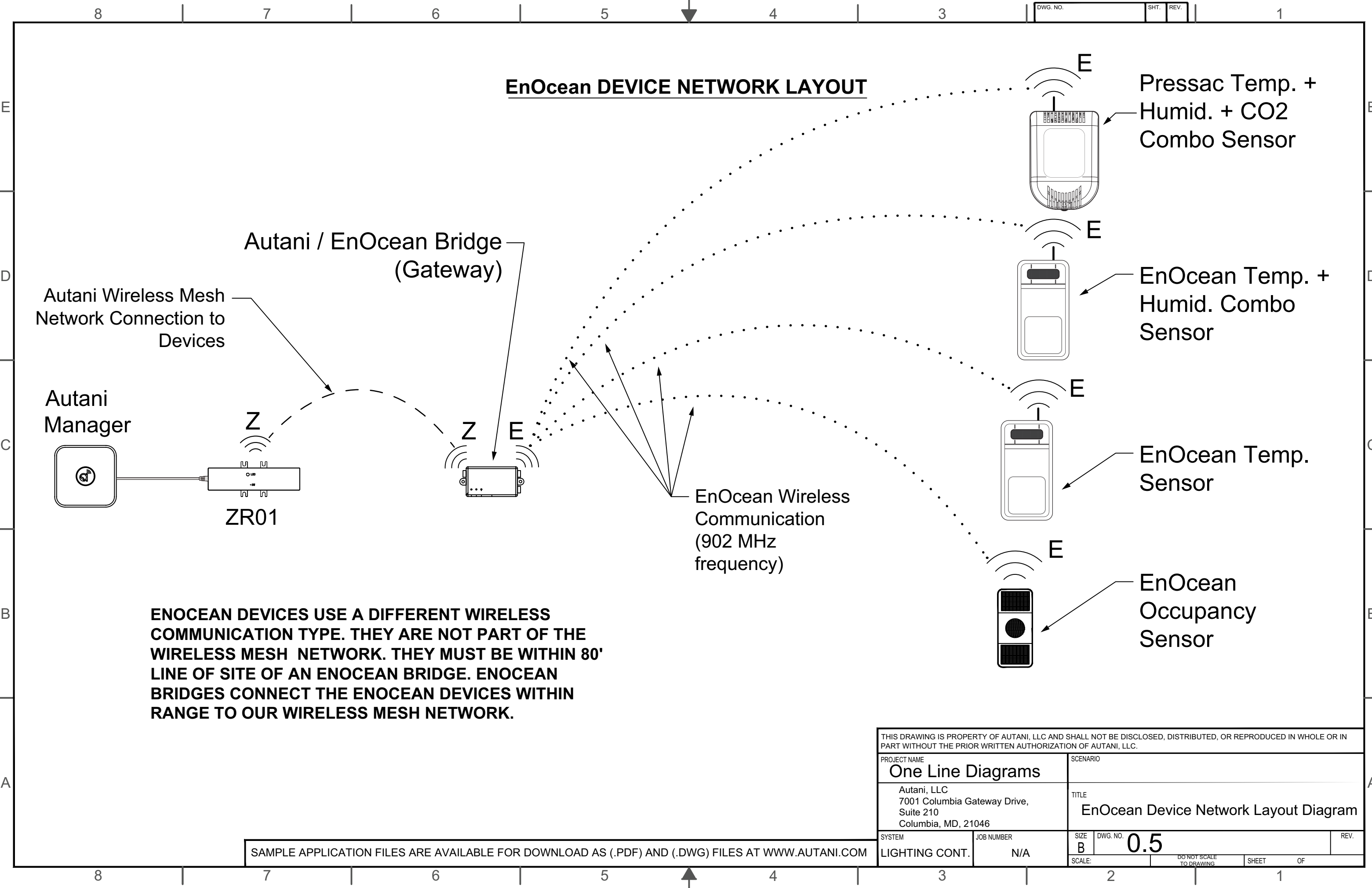


THIS DRAWING IS PROPERTY OF AUTANI, LLC AND SHALL NOT BE DISCLOSED, DISTRIBUTED, OR REPRODUCED IN WHOLE OR IN PART WITHOUT THE PRIOR WRITTEN AUTHORIZATION OF AUTANI, LLC.				
PROJECT NAME		SCENARIO		
One Line Diagrams				
Autani, LLC 7001 Columbia Gateway Drive, Suite 210 Columbia, MD, 21046		TITLE Typical Riser Diagram Using KPA Tier 3 -Energy Center Platform		
SYSTEM	JOB NUMBER	SIZE	DWG. NO.	REV.
LIGHTING CONT.	N/A	B	0.3	
SCALE:		DO NOT SCALE TO DRAWING SHEET OF		

SAMPLE APPLICATION FILES ARE AVAILABLE FOR DOWNLOAD AS (.PDF) AND (.DWG) FILES AT WWW.AUTANI.COM

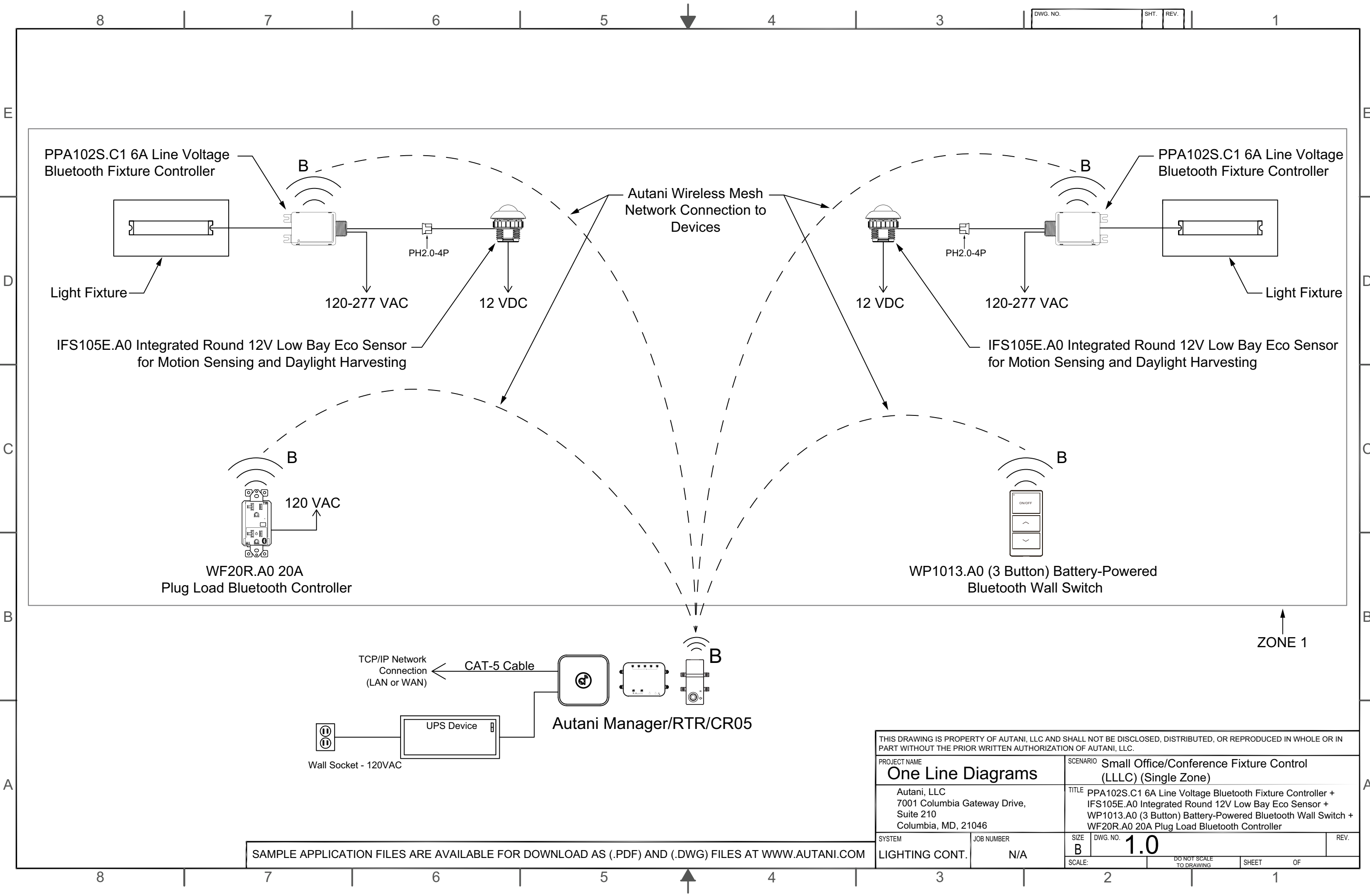


THIS DRAWING IS PROPERTY OF AUTANI, LLC AND SHALL NOT BE DISCLOSED, DISTRIBUTED, OR REPRODUCED IN WHOLE OR IN PART WITHOUT THE PRIOR WRITTEN AUTHORIZATION OF AUTANI, LLC.					
PROJECT NAME			SCENARIO		
One Line Diagrams					
Autani, LLC 7001 Columbia Gateway Drive, Suite 210 Columbia, MD, 21046			TITLE Multiple Autani Managers Network Topography Diagram		
SYSTEM		JOB NUMBER		SIZE	DWG. NO.
LIGHTING CONT.		N/A		B	0.4
				SCALE:	DO NOT SCALE TO DRAWING
				SHEET	OF



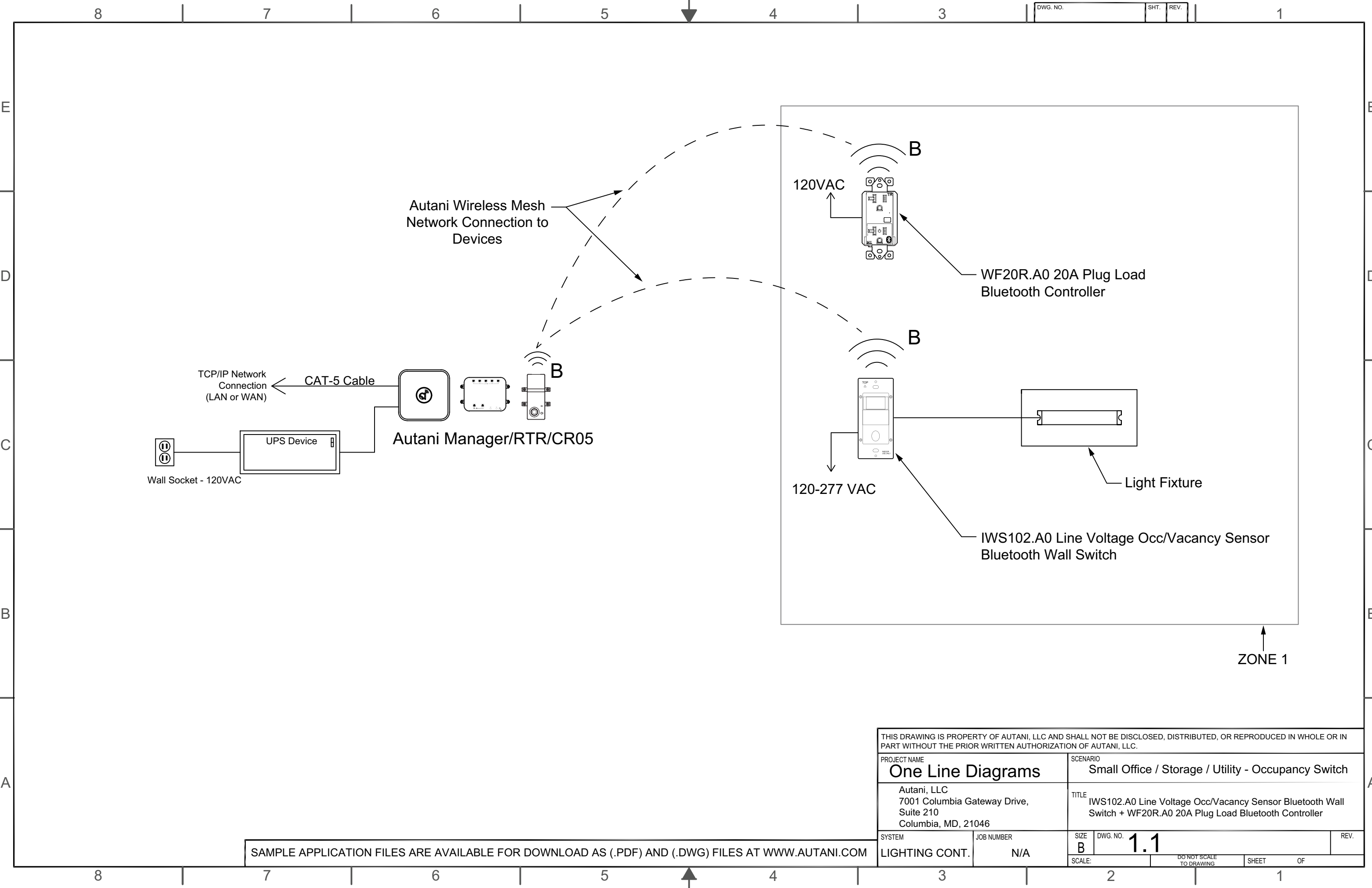
ENOCAN DEVICES USE A DIFFERENT WIRELESS COMMUNICATION TYPE. THEY ARE NOT PART OF THE WIRELESS MESH NETWORK. THEY MUST BE WITHIN 80' LINE OF SITE OF AN ENOCAN BRIDGE. ENOCAN BRIDGES CONNECT THE ENOCAN DEVICES WITHIN RANGE TO OUR WIRELESS MESH NETWORK.

THIS DRAWING IS PROPERTY OF AUTANI, LLC AND SHALL NOT BE DISCLOSED, DISTRIBUTED, OR REPRODUCED IN WHOLE OR IN PART WITHOUT THE PRIOR WRITTEN AUTHORIZATION OF AUTANI, LLC.					
PROJECT NAME			SCENARIO		
One Line Diagrams					
Autani, LLC 7001 Columbia Gateway Drive, Suite 210 Columbia, MD, 21046			TITLE EnOcean Device Network Layout Diagram		
SYSTEM		JOB NUMBER		SIZE	REV.
LIGHTING CONT.		N/A		B	0.5
SCALE:		DO NOT SCALE TO DRAWING		SHEET OF	



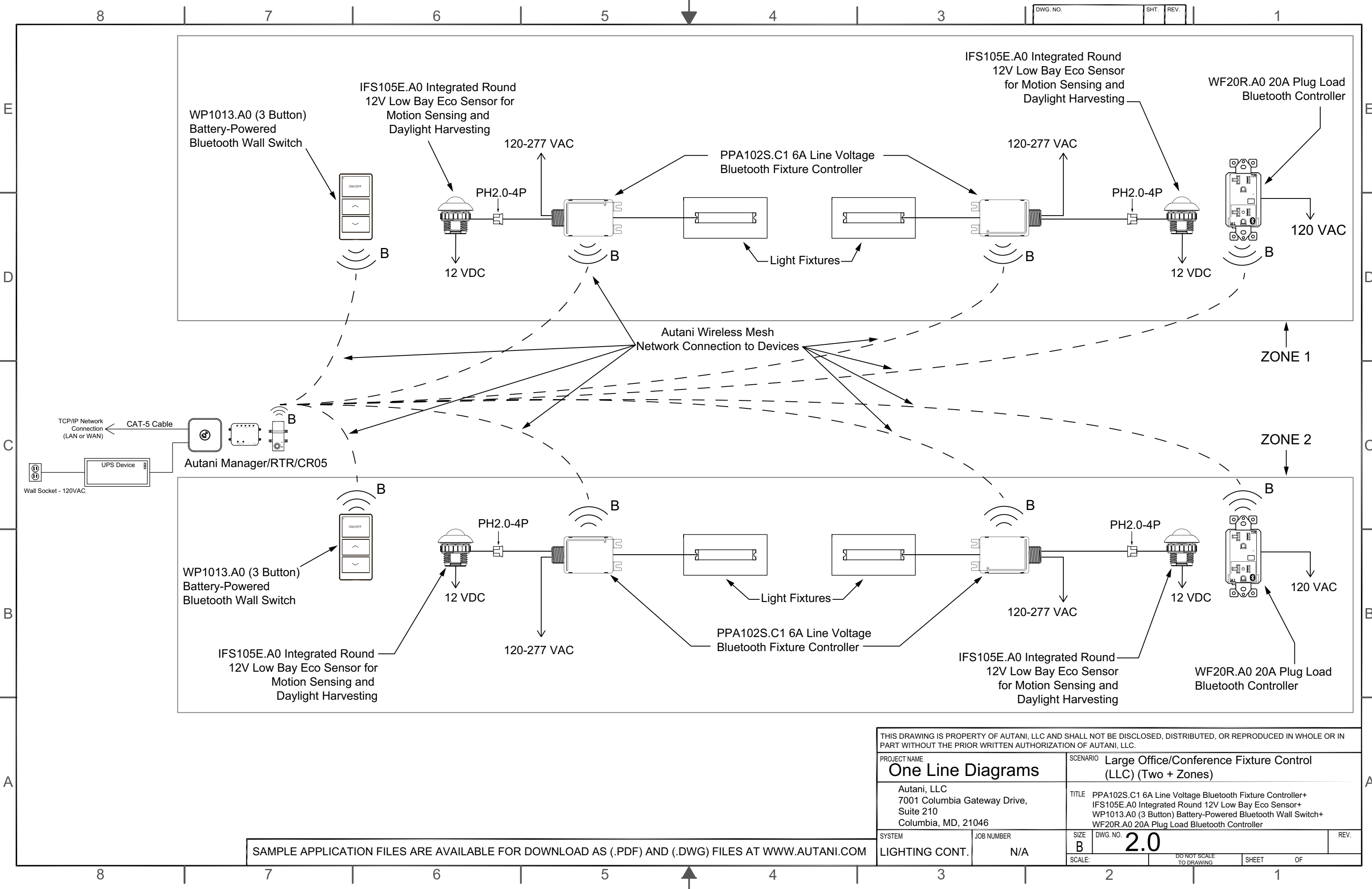
THIS DRAWING IS PROPERTY OF AUTANI, LLC AND SHALL NOT BE DISCLOSED, DISTRIBUTED, OR REPRODUCED IN WHOLE OR IN PART WITHOUT THE PRIOR WRITTEN AUTHORIZATION OF AUTANI, LLC.			
PROJECT NAME		SCENARIO	
One Line Diagrams		Small Office/Conference Fixture Control (LLC) (Single Zone)	
Autani, LLC 7001 Columbia Gateway Drive, Suite 210 Columbia, MD, 21046		TITLE PPA102S.C1 6A Line Voltage Bluetooth Fixture Controller + IFS105E.A0 Integrated Round 12V Low Bay Eco Sensor + WP1013.A0 (3 Button) Battery-Powered Bluetooth Wall Switch + WF20R.A0 20A Plug Load Bluetooth Controller	
SYSTEM	JOB NUMBER	SIZE	REV.
LIGHTING CONT.	N/A	B	1.0
SCALE:		DO NOT SCALE TO DRAWING	SHEET OF

SAMPLE APPLICATION FILES ARE AVAILABLE FOR DOWNLOAD AS (.PDF) AND (.DWG) FILES AT WWW.AUTANI.COM



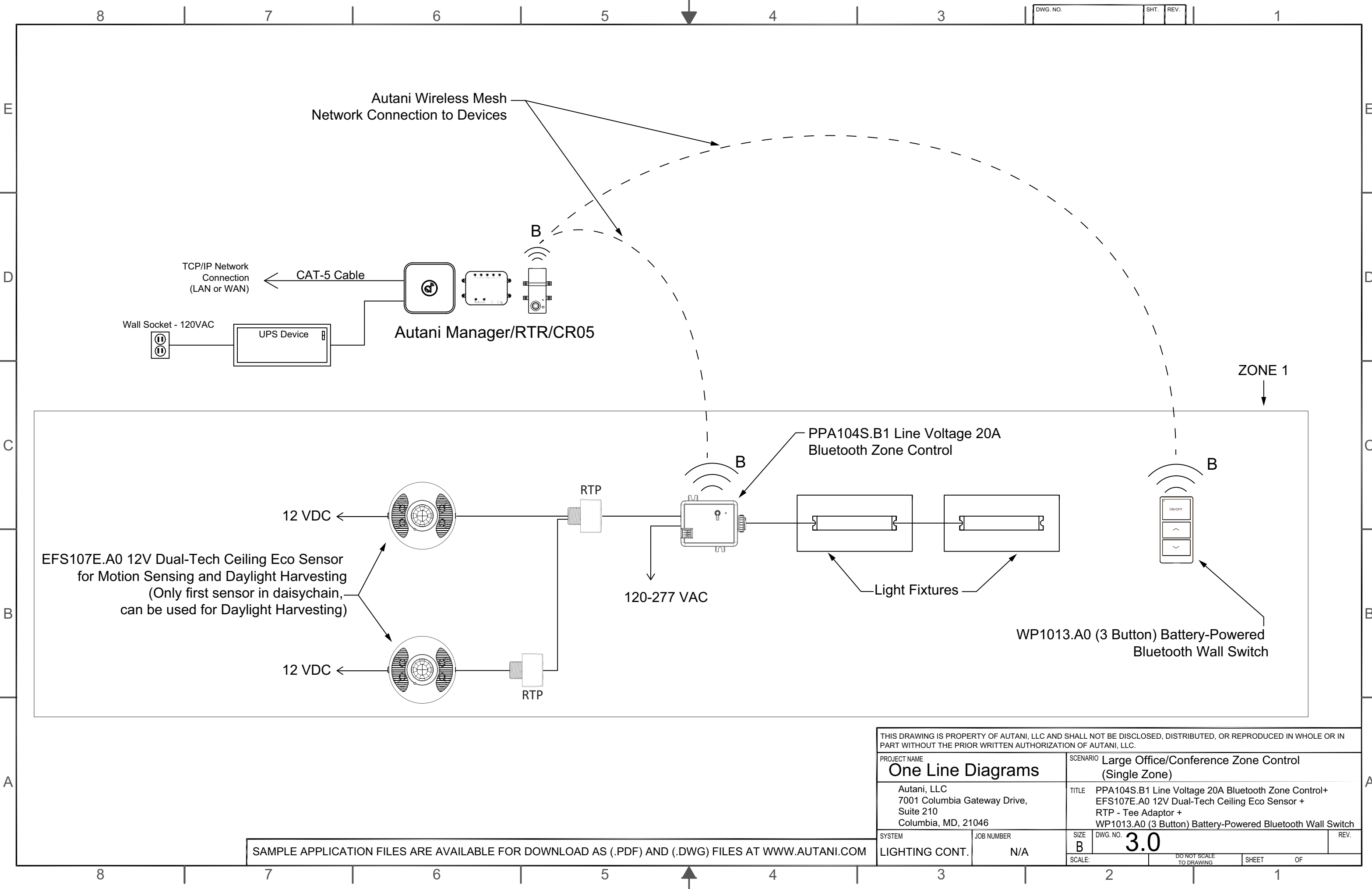
THIS DRAWING IS PROPERTY OF AUTANI, LLC AND SHALL NOT BE DISCLOSED, DISTRIBUTED, OR REPRODUCED IN WHOLE OR IN PART WITHOUT THE PRIOR WRITTEN AUTHORIZATION OF AUTANI, LLC.					
PROJECT NAME			SCENARIO		
One Line Diagrams			Small Office / Storage / Utility - Occupancy Switch		
Autani, LLC 7001 Columbia Gateway Drive, Suite 210 Columbia, MD, 21046			TITLE IWS102.A0 Line Voltage Occ/Vacancy Sensor Bluetooth Wall Switch + WF20R.A0 20A Plug Load Bluetooth Controller		
SYSTEM		JOB NUMBER		SIZE	DWG. NO.
LIGHTING CONT.		N/A		B	1.1
SCALE:		DO NOT SCALE TO DRAWING		SHEET	OF

SAMPLE APPLICATION FILES ARE AVAILABLE FOR DOWNLOAD AS (.PDF) AND (.DWG) FILES AT WWW.AUTANI.COM



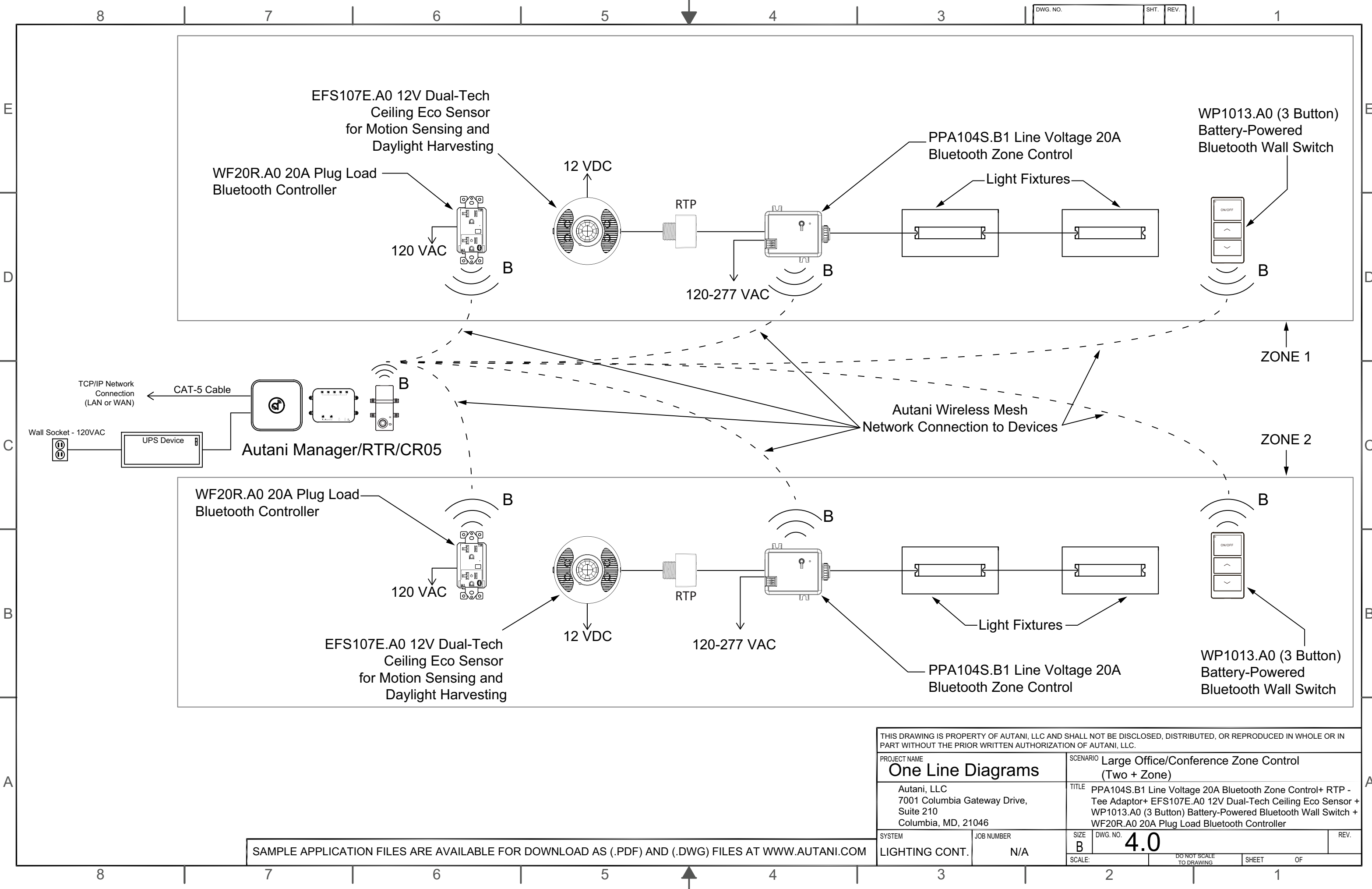
THIS DRAWING IS PROPERTY OF AUTANI, LLC AND SHALL NOT BE DISCLOSED, DISTRIBUTED, OR REPRODUCED IN WHOLE OR IN PART WITHOUT THE PRIOR WRITTEN AUTHORIZATION OF AUTANI, LLC.			
PROJECT NAME		SCENARIO	
One Line Diagrams		Large Office/Conference Fixture Control (LLC) (Two + Zones)	
Autani, LLC 7001 Columbia Gateway Drive, Suite 210 Columbia, MD, 21046		TITLE PPA102S.C1 6A Line Voltage Bluetooth Fixture Controller+ IFS105E.A0 Integrated Round 12V Low Bay Eco Sensor+ WP1013.A0 (3 Button) Battery-Powered Bluetooth Wall Switch+ WF20R.A0 20A Plug Load Bluetooth Controller	
SYSTEM	JOB NUMBER	SIZE	REV.
LIGHTING CONT.	N/A	B	
SCALE:		DWG. NO. 2.0	
DO NOT SCALE TO DRAWING		SHEET	OF

SAMPLE APPLICATION FILES ARE AVAILABLE FOR DOWNLOAD AS (.PDF) AND (.DWG) FILES AT WWW.AUTANI.COM



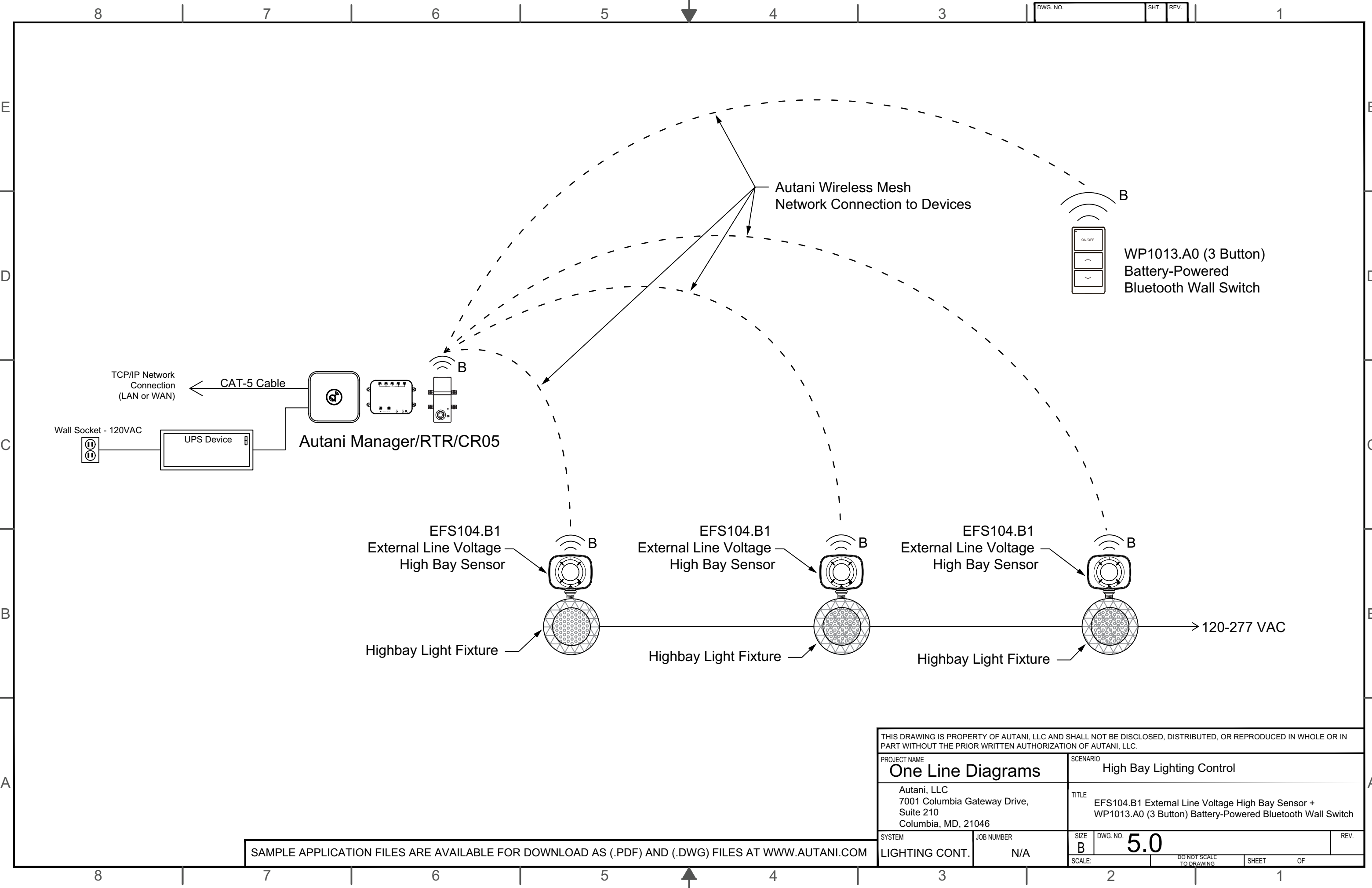
THIS DRAWING IS PROPERTY OF AUTANI, LLC AND SHALL NOT BE DISCLOSED, DISTRIBUTED, OR REPRODUCED IN WHOLE OR IN PART WITHOUT THE PRIOR WRITTEN AUTHORIZATION OF AUTANI, LLC.			
PROJECT NAME One Line Diagrams		SCENARIO Large Office/Conference Zone Control (Single Zone)	
Autani, LLC 7001 Columbia Gateway Drive, Suite 210 Columbia, MD, 21046		TITLE PPA104S.B1 Line Voltage 20A Bluetooth Zone Control+ EFS107E.A0 12V Dual-Tech Ceiling Eco Sensor + RTP - Tee Adaptor + WP1013.A0 (3 Button) Battery-Powered Bluetooth Wall Switch	
SYSTEM LIGHTING CONT.	JOB NUMBER N/A	SIZE B	DWG. NO. 3.0
SCALE:		DO NOT SCALE TO DRAWING	SHEET OF

SAMPLE APPLICATION FILES ARE AVAILABLE FOR DOWNLOAD AS (.PDF) AND (.DWG) FILES AT WWW.AUTANI.COM

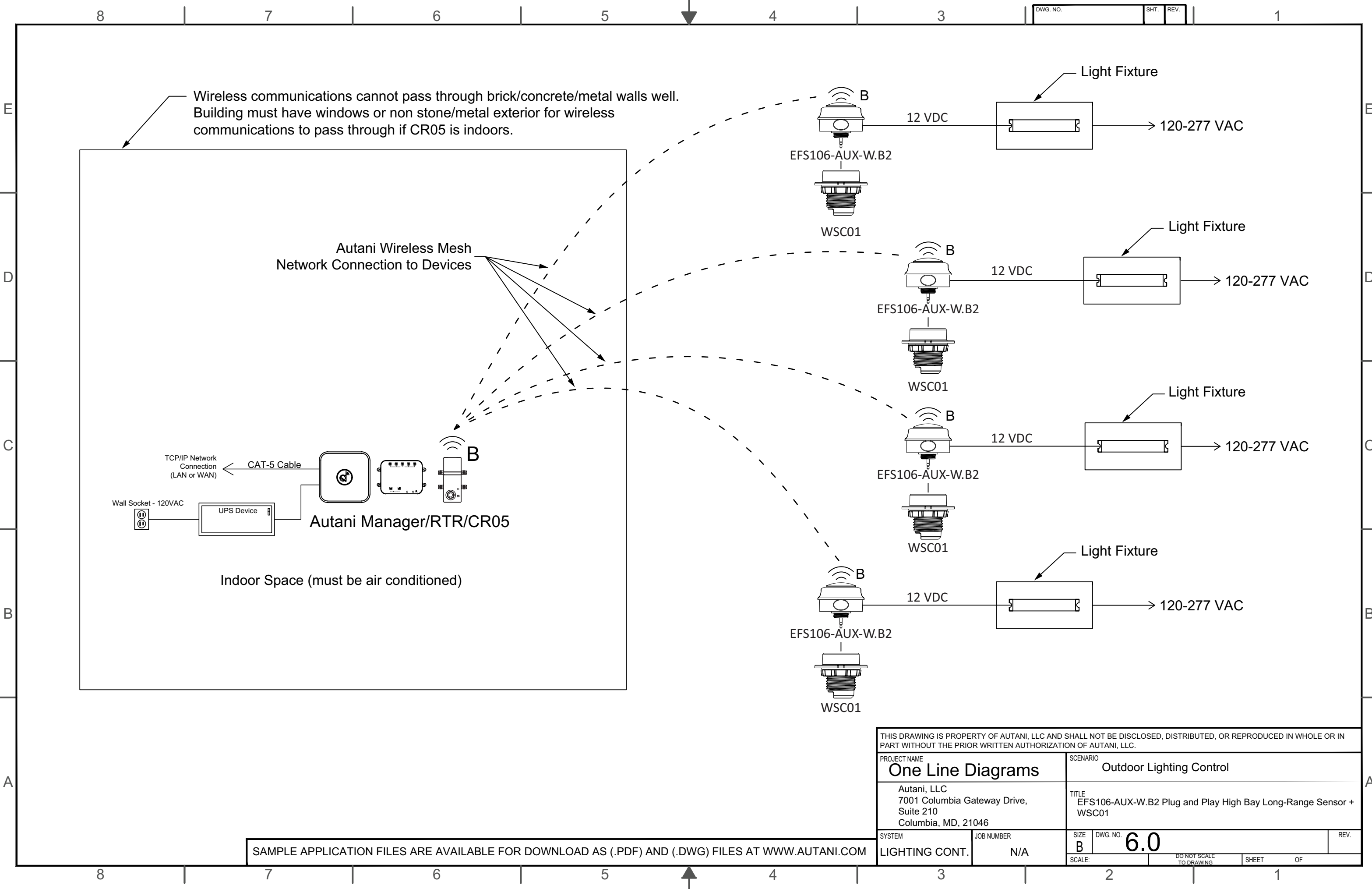


THIS DRAWING IS PROPERTY OF AUTANI, LLC AND SHALL NOT BE DISCLOSED, DISTRIBUTED, OR REPRODUCED IN WHOLE OR IN PART WITHOUT THE PRIOR WRITTEN AUTHORIZATION OF AUTANI, LLC.			
PROJECT NAME One Line Diagrams		SCENARIO Large Office/Conference Zone Control (Two + Zone)	
Autani, LLC 7001 Columbia Gateway Drive, Suite 210 Columbia, MD, 21046		TITLE PPA104S.B1 Line Voltage 20A Bluetooth Zone Control+ RTP - Tee Adaptor+ EFS107E.A0 12V Dual-Tech Ceiling Eco Sensor + WP1013.A0 (3 Button) Battery-Powered Bluetooth Wall Switch + WF20R.A0 20A Plug Load Bluetooth Controller	
SYSTEM LIGHTING CONT.	JOB NUMBER N/A	SIZE B	DWG. NO. 4.0
SCALE:		DO NOT SCALE TO DRAWING	
SHEET		OF	

SAMPLE APPLICATION FILES ARE AVAILABLE FOR DOWNLOAD AS (.PDF) AND (.DWG) FILES AT WWW.AUTANI.COM

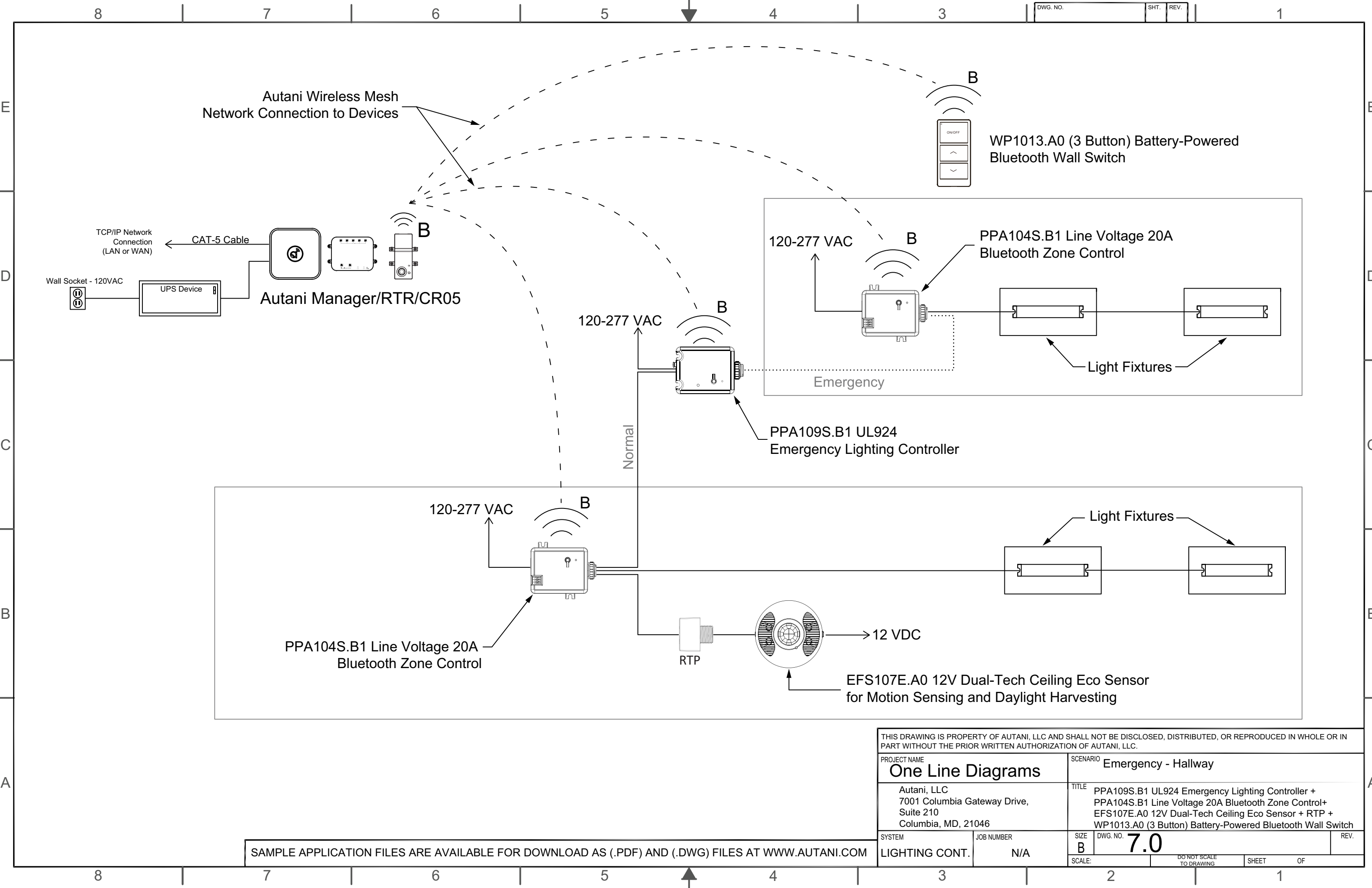


THIS DRAWING IS PROPERTY OF AUTANI, LLC AND SHALL NOT BE DISCLOSED, DISTRIBUTED, OR REPRODUCED IN WHOLE OR IN PART WITHOUT THE PRIOR WRITTEN AUTHORIZATION OF AUTANI, LLC.					
PROJECT NAME			SCENARIO		
One Line Diagrams			High Bay Lighting Control		
Autani, LLC 7001 Columbia Gateway Drive, Suite 210 Columbia, MD, 21046			TITLE EFS104.B1 External Line Voltage High Bay Sensor + WP1013.A0 (3 Button) Battery-Powered Bluetooth Wall Switch		
SYSTEM		JOB NUMBER		SIZE	REV.
LIGHTING CONT.		N/A		B	
SCALE:		DO NOT SCALE TO DRAWING		SHEET	OF
				2	1



THIS DRAWING IS PROPERTY OF AUTANI, LLC AND SHALL NOT BE DISCLOSED, DISTRIBUTED, OR REPRODUCED IN WHOLE OR IN PART WITHOUT THE PRIOR WRITTEN AUTHORIZATION OF AUTANI, LLC.					
PROJECT NAME			SCENARIO		
One Line Diagrams			Outdoor Lighting Control		
Autani, LLC 7001 Columbia Gateway Drive, Suite 210 Columbia, MD, 21046			TITLE EFS106-AUX-W.B2 Plug and Play High Bay Long-Range Sensor + WSC01		
SYSTEM		JOB NUMBER		SIZE	REV.
LIGHTING CONT.		N/A		B	
DWG. NO.		SHEET		OF	
6.0		1		1	
SCALE:		DO NOT SCALE TO DRAWING			

SAMPLE APPLICATION FILES ARE AVAILABLE FOR DOWNLOAD AS (.PDF) AND (.DWG) FILES AT WWW.AUTANI.COM



THIS DRAWING IS PROPERTY OF AUTANI, LLC AND SHALL NOT BE DISCLOSED, DISTRIBUTED, OR REPRODUCED IN WHOLE OR IN PART WITHOUT THE PRIOR WRITTEN AUTHORIZATION OF AUTANI, LLC.			
PROJECT NAME One Line Diagrams		SCENARIO Emergency - Hallway	
Autani, LLC 7001 Columbia Gateway Drive, Suite 210 Columbia, MD, 21046		TITLE PPA109S.B1 UL924 Emergency Lighting Controller + PPA104S.B1 Line Voltage 20A Bluetooth Zone Control+ EFS107E.A0 12V Dual-Tech Ceiling Eco Sensor + RTP + WP1013.A0 (3 Button) Battery-Powered Bluetooth Wall Switch	
SYSTEM LIGHTING CONT.	JOB NUMBER N/A	SIZE B	DWG. NO. 7.0
SCALE:		DO NOT SCALE TO DRAWING	SHEET OF

SAMPLE APPLICATION FILES ARE AVAILABLE FOR DOWNLOAD AS (.PDF) AND (.DWG) FILES AT WWW.AUTANI.COM

