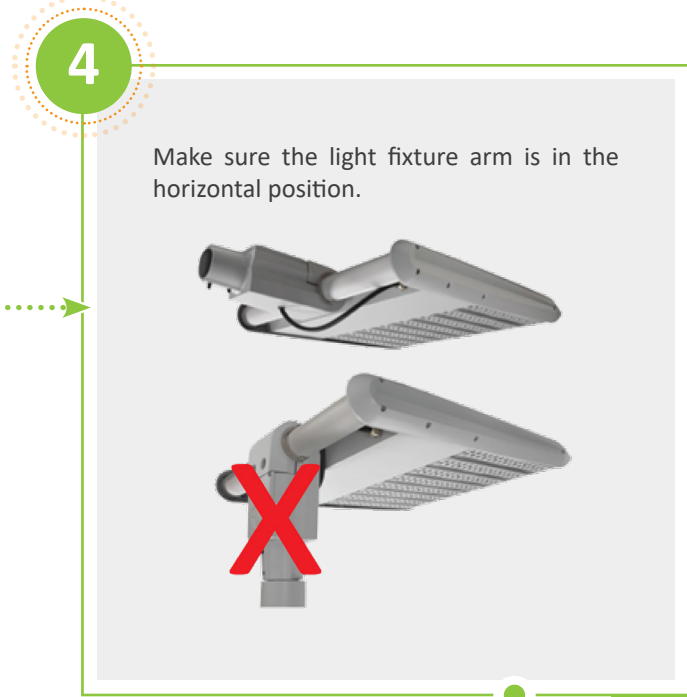


**2**

Wireless Area Lighting Interface (WALI) Nodes give you remote and scheduled control of your outdoor parking lot applications along with campuses, car dealerships, property management, sports arenas, etc.

The WALI Nodes can be grouped and/or individually controlled and installs on top of an outdoor luminaire.

The WALI comes with variants for different operating voltages (120v-277v, 480v).



**6**

ANSI C136.41 compliant 7-pin receptacle.

| On/Off & Dimming Supported | On/Off Supported |
|----------------------------|------------------|
|                            |                  |

Refer next page for electrical schematic.

**1**

On the provided list of device serial numbers, add the location for each of the WALIs.

**EXAMPLE**

SN:AUXXXXXXXXX

**3**

If an Autani CORE/Manager has not already been installed, see the following instructions in the CORE / Manager user manual:

- Autani CORE/Manager Quick Installation
- Selecting a Connection Method
- Setting up a Network and Commissioning Devices for Wireless Communication and Management

**5**

If necessary, remove from the lighting fixture:

- The shorting cap
- Any loose debris

- Do not open the WALI, there are no serviceable parts in the lighting controller. Unauthorized dismantling will void the warranty. For warranty information, see [www.autani.com/legal](http://www.autani.com/legal).

**7**

For installation, place the WALI Node firmly into the ANSI C136.41 compliant 7-pin receptacle and twist clockwise until it locks into place.

CONTINUED....

